

InterPhase™ CPF

Industrial Liquid/Liquid Coalescers

with Integral Pre-Filter

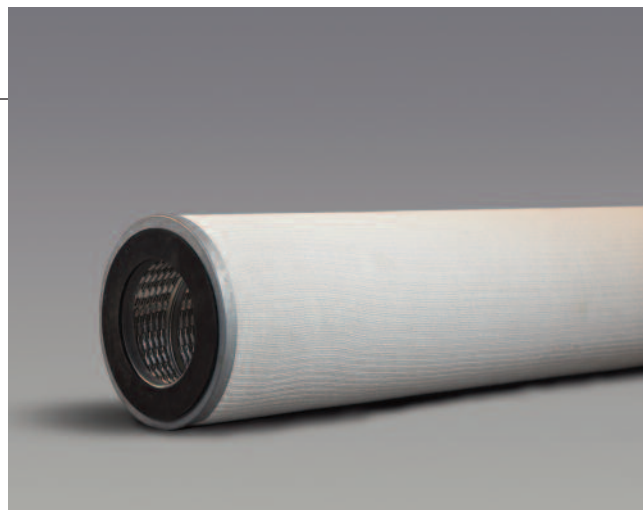
InterPhase CPF coalescers provide efficient and economical means of removing particulate and dispersed, free water from fluids in a wide range of applications. Decades of research and development in phase separation technology produced this broad range of liquid/liquid coalescers with higher coalescing efficiency and more contaminant holding capacity than conventional coalescers or other separation techniques. Install InterPhase CPF elements and expect improved product quality, reduced maintenance costs and fewer unscheduled shutdowns.

THE BOTTOM LINE

- The Choice is Yours**
 PECOFacet is an industry leader in liquid/liquid separations products. Don't get locked into a single source. Adding PECOFacet to the supplier list for all your liquid/liquid separations needs will ensure your access to the best products at competitive prices. InterPhase CPF elements are made with quality materials in an ISO certified manufacturing environment. Performance and structural integrity are backed by a no-nonsense factory warranty. Send us the manufacturer model number and we'll do the rest.
- Integral Pleated Pre-Filter**
 InterPhase CPF coalescers have a dual layer, large surface area, integral pre-filter. This prevents particulate from obstructing the coalescing media providing optimal coalescing performance and service life. In applications where stand alone pre-filter vessels are not an option the integral pre-filter will result in fewer element change-outs and more consistent product quality.
- High Burst Strength**
 Process upsets that send surges of particulate into a liquid/liquid coalescing vessel are common in many applications. In such cases, the coalescing elements reach high differential pressure rapidly, often before operations personnel can react. As a result, many coalescing elements burst sending large amounts of particulate and element debris down stream into the product stream and critical equipment. The InterPhase CPF can withstand 75 psid before bursting. This can prevent an incident that could lead to damage and product clean-up costs that are staggering.

APPLICATIONS

- General Industrial**
 chemicals, resins, solvents, hydraulic oils, lube oils
- Petroleum Refining**
 hydrocarbon feed stocks, fuels, crude, condensates, distillates
- Pipelines and Petroleum Terminals**
 diesel, gasoline, kerosene, jet, LNG, LPG
- Power Generation**
 turbine lube and hydraulic oil
- Pulp & Paper**
 lube and hydraulic oil
- Electricity Transmission**
 transformer oils



SPECIFICATIONS

MATERIALS

- COALESCING MEDIA** fiberglass
- PRE-FILTER** dual layer fiberglass & cellulose
- CORE & SHELL** steel (galvanized or tin plated)
- OUTER SUPPORT WRAP** PVC¹
- DRAIN LAYER** PET¹
- OUTER COVER** cotton
- END CAPS** steel (galvanized or tin plated)
- GASKETS** buna-n
- OPTIONS** gasket materials, adhesives, synthetic screw base

OPERATING DATA

Max Temp. [F]	pH Range	Max D.P. ² [psid]
240	5 - 9	75

- Recommended change-out DP is 15 psid**
- Normal flow direction is inside to outside**

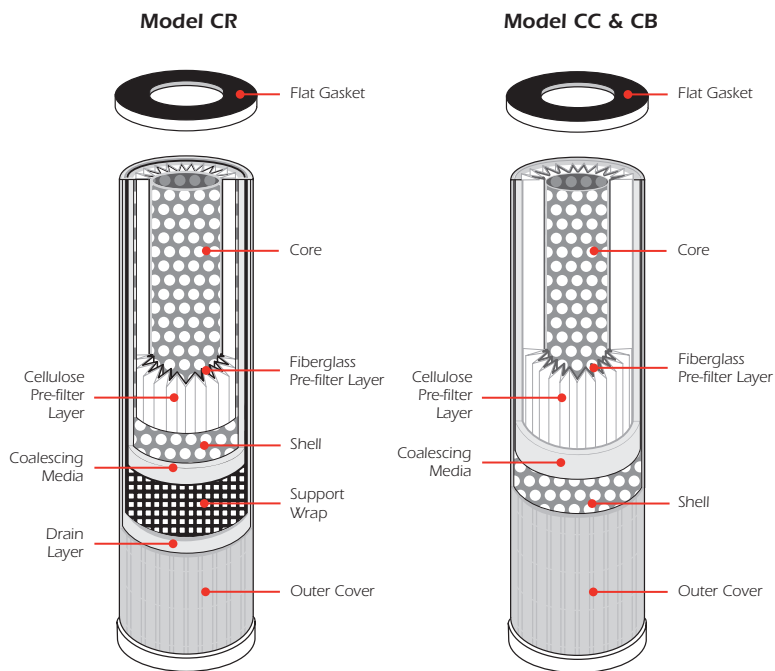
NOMINAL DIMENSIONS

Model	O.D. [in.]	I.D. [in.]	Length [in.]
C Z11	6.0	3.5	11.25
C Z14	6.0	3.5	14.5
C Z22	6.0	3.5	22.25
C Z28	6.0	3.5	28.75
C Z28-SB	6.0	3.0	29
C Z33	6.0	3.5	33.25
C Z33-SB	6.0	3.0	34
C Z43	6.0	3.5	43.25
C Z43-SB	6.0	3.0	45
C Z56	6.0	3.5	56.25
C Z56-SB	6.0	3.0	57

Z = Series Designation (C, B or R)

InterPhase™ CPF Industrial Liquid/Liquid Coalescers

with Integral Pre-Filter



REPLACEMENT OPTION FOR

- Banner CP Series
- Cohbam C6 Series
- Filter-Fab
- Filter-Mart
- Jonell JC Series
- Kaydon/Keene
- Murphy MC Series
- Racor CP & CE Series
- Royal RCC Series
- Velcon I Series
- Others

VESSELS

- Facet VCS Series
- PECO 110 Series
- Racor RVFS Series
- Velcon V, VV, and VF Series
- Other vessels manufactured to be compatible with industrial liquid/liquid coalescers.

NOTES

1. CR models only.
2. Max. D.P. may be limited by the vessel manufacturer's design.
3. Water removal ratings are based on kerosene type fuel, S.G.O.78 and viscosity of 33 SSU at 70°F and recommended flow rates. Removal efficiencies will vary with specific gravity, viscosity, temperature and flow rate.

PERFORMANCE

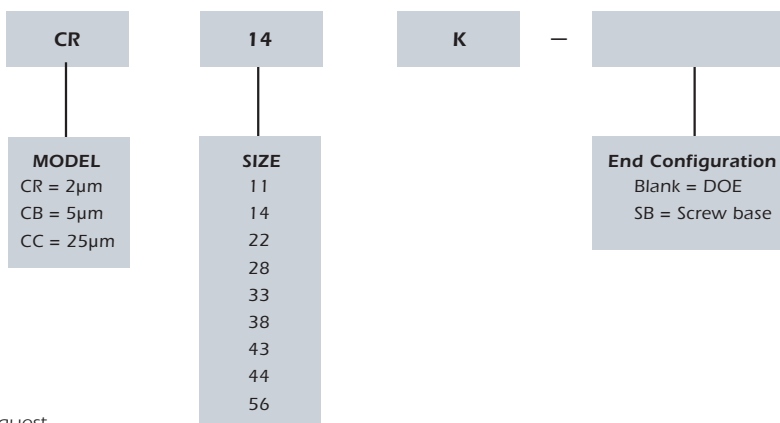
Particulate Retention at 90 - 95%

- **Model CR:** 2µm
- **Model CB:** 5µm
- **Model CC:** 25µm

Coalescing Performance³

- **Model CR:** 10 ppmw
- **Model CB:** 10 ppmw
- **Model CC:** 20 ppmw

ORDERING INFORMATION



- Other sizes available on request.



Wolters Industrial Park / P.O. Box 640 / Mineral Wells, TX 76068
Phone 940.325.2575 / 1.800.877.PECO / Fax 940.325.4622
perryequipment.com / Email PECOElements@PECOFacet.com

Brought to you by PECOFacet
a CLARCOR company

© 2009 PECOFacet
PECOFacet has a policy of continuous
product research and development
and reserves the right to change design
and specifications without notice.

EL-IP-TD-02 7/10